



The bottom line is
**improved health
 lowers costs**

Now you can connect the health of your employees to the health of your business. With care that's effective and personal choices that matter. CIGNA is ready to help members improve their health. And companies like yours improve their bottom line.

CIGNA is focused on helping members improve their health. Because it's one of the best and most sustainable ways to lower health care costs. That's what we believe. That's what we do.

To see how CIGNA programs can make a difference to your business, contact your broker or CIGNA representative.

www.cigna.com



A Business of Caring.

"CIGNA" or "CIGNA HealthCare" are registered service marks and refer to various operating subsidiaries of CIGNA Corporation. Products and services are provided by these operating subsidiaries and not by CIGNA Corporation. These operating subsidiaries include Connecticut General Life Insurance Company, Tel-Drug, Inc. and its affiliates, CIGNA Behavioral Health, Inc., Intracorp, and HMO or service company subsidiaries of CIGNA Health Corporation and CIGNA Dental Health, Inc. In Arizona, HMO Plans are offered by CIGNA HealthCare of Arizona, Inc. In California, HMO Plans are offered by CIGNA HealthCare of California, Inc. In Virginia, HMO Plans are offered by CIGNA HealthCare of Virginia, Inc. and CIGNA HealthCare Mid-Atlantic, Inc. In North Carolina, HMO Plans are offered by CIGNA HealthCare of North Carolina, Inc. All other medical plans in these states are insured or administered by Connecticut General Life Insurance Company.

805349 06/06 © 2006 CIGNA



Central Vermont Lifestyles

Central Vermont Chamber of Commerce
 (802) 229-5711 ~ www.central-vt.com

It's about
quality of *Life!*



REHABILITATION RESPITE CARE LONG-TERM CARE HOSPICE CARE

Subacute Rehabilitative Care

- Stroke
- Orthopedics
- Alzheimer's disease management
- Neurological care
- Wound care
- Post-surgical care
- IV therapy
- Pain management

When you or someone you love needs rehabilitative care, Rowan Court will help to restore as much independence as possible—as soon as possible.

Our subacute care unit, private rehab suites and skilled nursing care set us apart. We also offer a wide range of long-term care services, activities and events to provide the highest possible quality of life.

We invite you to learn more about us at www.cplRowanCourt.com. We welcome your call or visit.



Rowan Court
Health and Rehabilitation Center

378 Prospect Street, Barre, VT 05641
802-476-4166 ■ cplRowanCourt.com



RECREATION

Recreational activities are enhanced by the natural landscape. The Green Mountains provide a beautiful backdrop for winter sports. Sugarbush, Mad River Glen, Bolton and Stowe ski areas are within an hour of Montpelier and Barre. Cross-country skiing, snowshoeing, and snowmobiling are also popular winter sports.

Beautiful golf courses are tucked into the rolling hills and woodlands.

Hikers enjoy the Long Trail, which runs the entire length of the state from Canada to Massachusetts. The three-hour hike to the summit of Camel's Hump in Duxbury is popular among residents.

Biking is also very popular, whether on one of the town bike paths or exploring off-road.

Abundant lakes, ponds, and streams dot the landscape, providing access to boating, swimming, and fishing.

Visit <http://www.central-vt.com/outdoors>

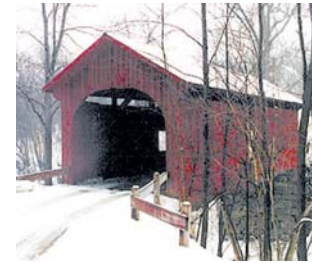


HOUSING

Central Vermont offers a wide variety of housing choices ranging from country living to city neighborhoods.

Whether you desire a city neighborhood, a village community or the rural countryside – Central Vermont has many options.

Home prices vary from town to town, with average prices ranging from \$120,000 to \$400,000. Rents in the region also vary widely with a median rent in the county of \$995 for a three-bedroom apartment.



WELCOME!

Central Vermont is blessed with the best of all worlds - pristine beauty, impressive cultural activities, scores of educational opportunities, a diverse economy and strong families.

Central Vermont is rich in tradition, proud of its communities, and committed to its future. Each city and town is unique - each with its own history and personality.

Washington County is Vermont's third most populated county. Named Jefferson County when it was first created in 1810, the name was changed in 1814 to Washington County. Its 20 municipalities vary in size from towns of fewer than 1,000 residents to cities nearing 10,000.

Central Vermont represents about 10 percent of the state in land area, students, population, and labor force.

The region's culture is as diverse as its landscape. Residents take pride in their communities, where local involvement is still a way of life.

Montpelier, the capital, isn't the largest city in the state – or even in the region. Central Vermont has three of the state's 15 largest municipalities, but none are in the top five.

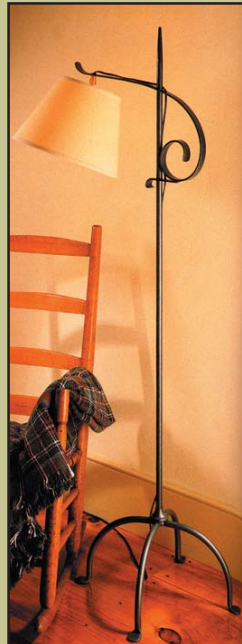
Visit www.central-vt.com.

Lighting
for the way you live

Visit our 3,000 sq. ft. showroom:
Contemporary to Classic • Stained Glass
and Much More

Barre Electric
& Lighting Supply, Inc.

Barre- Montpelier Road • Barre • 476-0280
Mon. - Fri. 7am -5pm, Sat. 8am-2pm



THE TOWNS

Montpelier is the seat of state government and home to major insurance companies. Known as the smallest state capital in the nation, its downtown is graced with historic architecture and offers a charming blend of services and unique opportunities.



Barre is a manufacturing center dominated by granite-related industries.

Waterbury, Berlin, and Northfield also host active commercial centers, and most towns have a village core with several small businesses.

Resort towns in the Mad River Valley have a special character all their own. The hospitality industry dominates these towns, but not the landscape.

Visit www.central-vt.com/towns/index.html.

Town Clerks

Barre City - Eugene G. Stratton	476-0242
Barre Town - Donna Kelty	479-9391
Berlin - Rosemary Morse	229-9298
Cabot -	563-2279
Calais - Eva M. Morse	456-8720
Duxbury - Ken Scott	244-6660
East Montpelier - Terri Conti	223-3313
Fayston - Virginia Vasseur	496-2454
Marshfield - Bobbi Brimblecombe	426-3305
Middlesex - June B. Lakin	223-5915
Montpelier - Charlotte L. Hoyt	223-9500
Moretown - Susan Goodyear	496-3645
Northfield - Kim Pombar	485-5421
Orange - Rita R. Bisson	479-2673
Plainfield - Linda B. Wells	454-8461
Roxbury - Tammy Legacy	485-7840
Waitsfield - Jennifer Peterson	496-2218
Warren - Reta Goss	496-2709
Washington - Carol Davis	883-2218
Waterbury - Donna Centonze	244-8447
Williamstown - Deborah Palmer	433-5455
Woodbury - Julie Blake	456-7051
Worcester - Carolyn Wells	223-6942



JACK ASSOCIATES

147 State St., Montpelier
(802) 223-6302 x326



Search for homes on the web at:
loripinard.century21jackassociates.com



loripinard@c21jack.com  REALTOR



EDUCATION

As each town has its own character, so do the schools they have created to serve their youth. Central Vermont's elementary schools are mostly small rural facilities serving a single town. High schools are larger and serve multi-town districts.

The only real consistency from one school to another is the commitment to the best possible education for the region's youth. Team spirit thrives whether in sports, the arts, or academic programs.

Seven colleges punctuate the region's educational excellence and are an important economic force. They include Norwich University, Union Institute of VT College, New England Culinary Institute, Community College of VT, University of VT Continuing Education, Woodbury College, Goddard College, and VT Technical College.

Visit <http://www.central-vt.com/region/ed/index.html>



EMPLOYMENT

Employment in Central Vermont is dominated by insurance and government in the capital city, manufacturing and granite-related industries in Barre, and ski resorts in the Warren, Waitsfield, and Fayston areas. Waterbury hosts several specialty food processors and many state employees.

Local employment is above the state average in the insurance, quarrying, and government sectors, below in agriculture, manufacturing and transportation.

Retail, construction and service employment are about average.

Many of the downtowns have beautifully restored their historic buildings that now provide a unique setting for businesses.

Visit <http://www.central-vt.com/employ/index.html>

Triad Temporary Services, Inc.

Celebrating over 20 years in business!

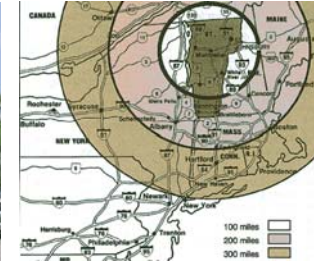
We are Vermont owned and operated **employment specialists** since 1986 offering a broad range of workers from entry level to highly skilled professionals. Our people are qualified and ready to go to work now with reference checks and evaluations completed. Give us a shout and let us help you meet your employment needs. We invite you to take a tour of our web site for more information.

Owner/President: Stan Grandfield

Toll free 800-894-8455

Fax 802-864-0046

www.triadtemp.com



TRANSPORTATION

Central Vermont has easy access to and from eastern seaboard cities and the Canadian markets. Interstates connect the region with Boston and New York, which are three and five hours away respectively. Portland is less than a three-hour drive, and Montreal is only about two hours away.

The Edward F. Knapp Airport in Montpelier moves freight and corporate aircraft, and Burlington International Airport is just off I89, 45 minutes away.

Vermont Transit/Greyhound connects to most major cities from its office in Montpelier. Green Mountain Transit Agency operates local bus routes and rideshare programs.

Visit <http://www.central-vt.com/region/trans/index.html>.

Celebrating Our 50th Year Serving Central Vermont... and Beyond!



Cadillac

— VERMONT'S TRUCKSTORE —

BARRE-MONTPELIER Rd. • MONTPELIER

1-800-278-CODY ■ 802-223-6337

Visit our Website: www.codychevrolet.com





BLUE FLAME GAS

Serving New England with Pride

- 24-Hour Emergency Service
- Price Protection Plans
- Service Protection Plans
- Propane Equipment

Two Locations to Serve you in the Central Vermont Area

South Barre Office

802-479-3306
800-479-9068 Toll Free
802-479-9068 Fax
684 South Barre Rd.
PO Box 500
South Barre, VT 05670

Waterbury Office

802-244-1811
866-837-1959 Toll Free
802-244-1813 Fax
676 US Route 2
PO Box 599
Waterbury, VT 05676

The Right Choice....

Choosing the right propane company for you and your family is important. Customers choosing Blue Flame Gas enjoy quality services and propane at competitive prices year-round. Perhaps you are not satisfied with your current supplier, or you are building or remodeling your home. Our new customer specials make it easy for you to start enjoying our friendly customer service.



Our Advertisers

Northfield Pharmacy	14 Depot Sq., Northfield	(802) 485-4771
Blue Flame Gas	684 S. Barre Rd., S. Barre	(802) 479-3306
VT Mutual Ins.	89 State St., Montpelier	(802) 223-2341
CV Medical Center	Fisher Rd., Berlin	(802) 371-4100
Triad Temporary	156 Commerce St., Williston	(802) 864-8255
Barre Electric	Barre Montpelier Rd., Barre	(802) 476-0280
Cigna Healthcare Ins.	Burlington	(888) 244-6264
Rowan Court	378 Prospect St., Barre	(802) 476-4166
Century 21 Jack Assoc.	147 State St., Montpelier	(802) 223-6302
Cody Chevrolet	Barre Montpelier Rd., Montpelier .	(802) 223-6337
Builder Specialties	92 River St., Montpelier	(802) 223-5583

Visit <http://www.central-vt.com/services/index.html>

Vermont's Premiere Kitchen and Bath Design Studio

Cabinetry ~ Hardware ~ Appliances ~ Windows & Doors ~ Flooring ~ Fixtures ~ Whirlpool Baths ~ Showers

Custom Laminate, Solid Surface, Butcher Block and Stone Countertops



Visit our Showroom or call a designer today!
92 River Street Montpelier, Vermont 05602
Phone 802-223-5583 or Toll Free 800-479-3636
www.builderspecialties.com

HEALTH CARE

Central Vermont maintains and enjoys an excellent health care network anchored by Central Vermont Medical Center. Area nursing homes include Rowan Court, Mayo Nursing Home, Woodridge and Berlin Convalescent Center. Many communities have privately owned medical facilities providing a wide range of services.

In-home nursing care is available from Central Vermont Home Health Agency which offers a variety of services ranging from physical therapy and drug administration to housekeeping and meal preparation.

Visit <http://www.central-vt.com/relocate/index.html>



Building a
Healthier Future...



...for Central Vermont.

Our renovation project will bring a new day hospital, family-oriented birthing center, and state-of-the-art laboratory. See more information: www.CentralToYourWellBeing.org

 CENTRAL VERMONT MEDICAL CENTER
Member of  DARTMOUTH-HITCHCOCK ALLIANCE
Central to your Well-Being



THE CLIMATE

Change! It's the one constant in Central Vermont's weather that you can rely on. Residents know not to put much faith in the forecast while making plans.

July's average high is 81 degrees, with a low of 55 degrees. January's average high is 27 degrees with an average low of 4 degrees.

Snowfall averages 9 feet annually, most of which comes in a handful of major storms that may drop several feet at a time. Gratefully, exceptional road crews keep traffic flowing. Consistent winter cold assures that most snow that falls after Thanksgiving will stay until March.

Many feet of melting snow, combined with spring rain and dirt roads, leads to a fifth season – "mud season" – that is uniquely Vermont's.

About 40 inches of annual precipitation falls, roughly 30 as rain. The other 10 creates about 108 inches of snow.

Fall colors are well known worldwide, but other seasons are just as beautiful. A fresh snowfall serenely blankets the ground with white while leaving tufts like cotton on tree branches. Spring brings a mix of every shade and hue of green as new leaves are born.

Visit <http://www.central-vt.com/climate/climate.htm>



Since 1828

Vermont Mutual Insurance Group

Vermont Mutual Insurance Company
Northern Security Insurance Company, Inc.
Granite Mutual Insurance Company
89 State Street, Montpelier, VT 05602
Tel: (802) 223-2341

CONTACT YOUR LOCAL INDEPENDENT AGENT
TODAY OR VISIT OUR WEBSITE

WWW.VERMONTMUTUAL.COM

TO FIND AN INDEPENDENT AGENT NEAR YOU



A BEAUTIFUL PLACE

The region's most recurring visuals are the natural splendor of the Green Mountains and the rolling hills, barns and farmhouses of the region's agriculture.

Lakes and streams dot the landscape.

The clear waters provide a natural setting for the many historic covered bridges as well as opportunities for swimming, boating and fishing.

Vermont's winters are crisp and clean as a blanket of snow covers the earth.

Spring brings renewal and anticipation of the warmth and lush greenness of summer.

Fall is the true splendor of the state. Autumn brings a burst of brilliant color and an air of festivity to the region.

Central Vermont's residents are always ready to come to the aid of those in need, but they are not quick to assume that help is needed or desired. They have, and expect in others, a deep-rooted pride in personal independence.

The state has an outstanding natural environment, quality health

TO CALL HOME

care, recreational facilities, educational systems and performing arts. It is a great place for families.

Generations of residents have carved a living from buried granite, treacherous forests and mediocre soils.

A common thread in the fabric of Central Vermont is the celebration of community. Festivals and annual events are conducted in every town of the region. They may be as small as the volunteer firefighters' chicken barbecue or the church chicken pie supper, or as large as weeklong arts festivals.

The event's size is not as important as bringing residents together to participate with each other in the community.

Visit <http://www.central-vt.com>

