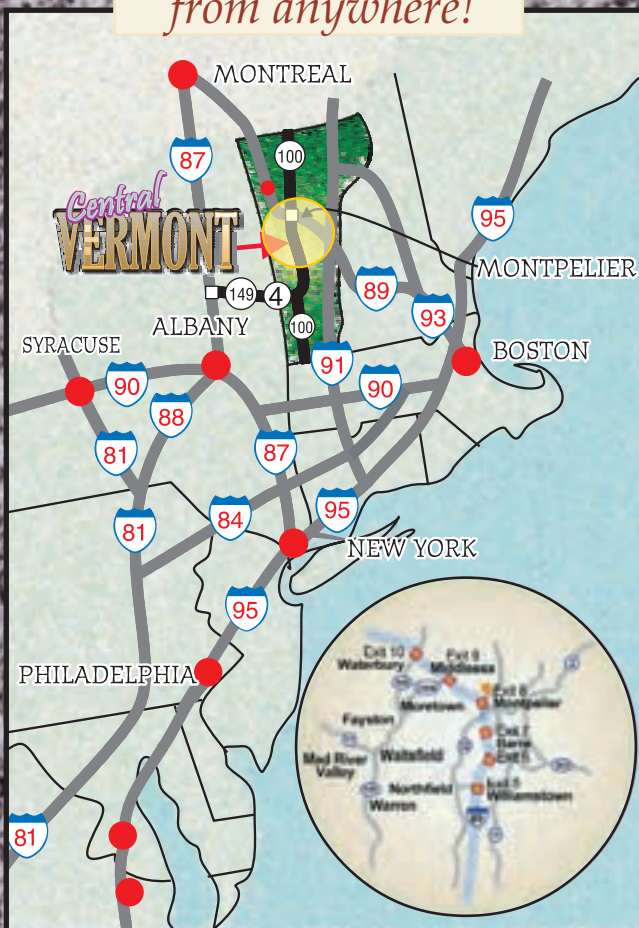


Central Vermont is an exceptional biking location for all skill levels! Bring the family to one of the local bike paths, enjoy a half-day tour, or challenge yourself with trail or mountain biking.



Be sure to get a Bike Tours brochure by calling (802) 479-4619, Tollfree at 877-887-3678 or download maps from the web at: www.central-vt.com/visit/biketour

*You can get here ...
from anywhere!*



Central VERMONT



Visitor's Guide

- Barre
- Montpelier
- Northfield
- Waitsfield
- Waterbury

BEAUTY! HISTORY! RECREATION! CRAFTSMANSHIP!

CENTRAL VERMONT ~ PURE VALUE... AFFORDABLE FUN!

Touring Vermont's State Capitol, pictured here and on the cover, is one of the many no-cost, high-value adventures available to visitors. Its gold-leaf dome (real gold) shines brightly against the wooded hillside in downtown Montpelier. The interior is adorned with marble floors, spiral staircases and finely carved wood trim. This State House is Vermont's third, and was built in 1859 on the same site as the second after it was gutted by a fire caused by a wood-burning heating system. It remains one of the nation's oldest and best-preserved state capitols still in use.

On the front portico, the only remaining portion of the earlier Greek Revival State House of the 1830's, stands a statue of Ethan Allen, fabled leader of the Green Mountain Boys. Tours of this magnificent building are available during the summer months and fall foliage.

Vermont provides a rewarding visitor experience anytime – but never more so than in an uncertain economy with volatile fuel prices.

The state's scenic splendor is unfurled from Massachusetts to Canada. It is there to be experienced from the air, from the road or on foot. There is no gawking charge – the view is free for all to enjoy.

And there's more than just scenery. From ancient cemeteries to downtown buildings built before the Civil War, from generational farms to Ben & Jerry's,

and from Shakespearean theater to modern dance, Central Vermont features the state's rich cultural heritage.

The landscape provides a personal playground whether you're seeking a fun family ride on a bike path or an exhilarating mountain biking experience, paddling across a tranquil lake or maneuvering the Mad River, enjoying a serene walk in the woods or a heart pounding Green Mountain climb.



The woods and the waters, the artistry of the cemeteries, the history of the state house, granite sculptures, vibrant downtowns, and the majesty of the Green Mountains contribute to every visit.

Each visitor builds his own unique experience, lavish or frugal. Combine award-winning accommodations with gourmet dining or choose a campsite and a cookout. Vermont's character provides the backdrop.

The state's reputation for careful preparation of quality products can be seen throughout Central Vermont. Hand-crafters and maple producers, wine-makers and carvers, brew masters and bakers open their operations to guests. Nationally known granite, coffee, cheeses, cider

and ice cream flow from producers nestled in the Green Mountains. They, too, welcome visitors.

Enjoy your stay in Central Vermont while sticking to your budget!

www.central-vt.com

1-877-887-3678

THE WONDERFULLY VERSATILE OUT-OF-DOORS.

One of the great lures of Central Vermont is its extraordinary range of recreational activities. The variety is as startling as the pleasures are endless. In the air, down the mountains, along the back roads, on



the water, the region offers diversions and challenges that engage the mind and

restore the body, regardless of skill or age.

Is your idea of outdoor recreation a bike ride around the block or hiking from Canada to Massachusetts? Do you want to photograph a mountain, or climb one? Are you looking for an hour of miniature golf or a week going from one of the area's golf courses to another?

Would you prefer to dangle your feet in the water or dangle a line for brook trout? Would you rather go horseback riding, camping, canoeing or swimming?

If it can be done in the great outdoors, the odds are it can be done in the nation's most rural state. Outside the cities of Barre and Montpelier, Central Vermont has about 850 square miles with just 40 residents per square mile. There are numerous mountains, forests, lakes and streams, but very few people. Nature is ready to provide your favorite outdoor activity.

Hiking opportunities are unlimited. The Long Trail connects the region's highest peaks, Camel's Hump and Mount Mansfield, a dozen miles north. Hikers can climb atop Camel's Hump in about three hours. Then they can simply descend, or use the summit as the beginning of a journey of days or weeks.

Prefer to just take a walk? Downtown walking tours in Barre, Montpelier, the Mad River Valley and Waterbury can add to your enjoyment. Tour brochures with maps can be picked up at information centers and many retail locations.

Sections of the Central Vermont Regional Path, a proposed 14.5-mile regional bicycle/pedestrian facility which will extend from the State Capital through Berlin, Barre City and into Barre Town utilizing a former railroad bed and paralleling the Winooski River,

has completed portions in Montpelier, Berlin and Barre Town, providing a safe, convenient way for bicyclists and pedestrians of all ages and abilities to enjoy the area.

Millstone Hill Touring Center is a biking and hiking recreation center with over 1,500 acres of unique terrain

and more than 70 miles of scenic trails providing access to dozens of historic quarry sites. Ponds, lakes and streams dot the landscape



and harbor ideal spots for a family picnic at water's edge. Enjoy the ride down the 250-foot slide at Limehurst Lake, or take a boat, kayak or canoe and enjoy the wildlife along any shoreline. Free access points, boat launches and fishing spots are abundant throughout the region, and groomed beach, picnic areas, and nature trail are available at many locations.

If you prefer spectator sports, Barre is home to “The Nation’s Site of Excitement” where short track stock car racing is a passion during summer months. In addition there are collegiate and semi-pro teams to provide a wide range of enjoyment.

The Vermont Mountaineers, two-time champions of the New England Collegiate Baseball League have a 42-game schedule that affords fans 21 home games played at historic Montpelier Recreation Field.

The semi-pro Vermont Ravens football team has recently expanded team ownership to include a small group of dedicated and committed people from local communities to help run the organization. Home games are played at Spaulding High School beginning in July.

The Vermont Frost Heaves, a Premier Basketball League team, provides affordable family entertainment during the winter at the Barre Municipal Auditorium.

Vermont has the greatest concentration of covered bridges in the United States - a total of 114 in this tiny state, many of which are still in use. One hundred years ago there were over 600 covered bridges, but the flood of 1927 left only about 200. Nearly half of those have been lost to fire or development since, but the remaining are among the nation’s finest.

Central Vermont has 14 of those covered bridges including a unique collection in Northfield Falls where two bridges are within a quarter mile of each other on

the same road, and can be viewed simultaneously - the only place in the East where this occurs.

Spanning the narrows of Sunset Lake in Brookfield is a floating bridge buoyed by pontoons. Swimming or fishing from the bridge is common. In January it is a

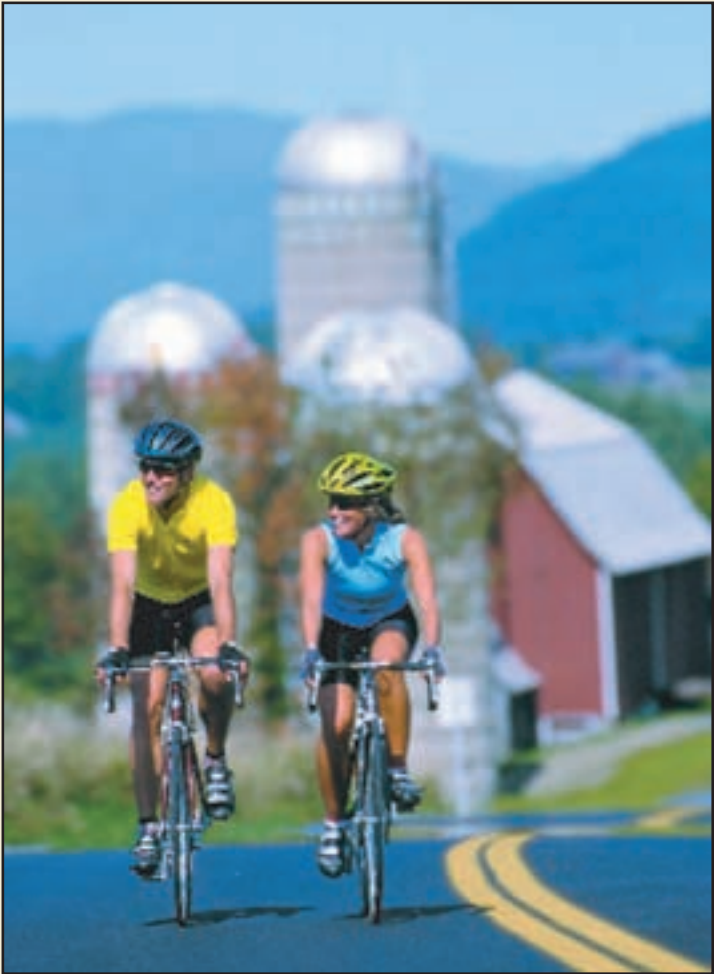
coveted viewing point for one of New England’s last remaining ice harvest festivals. Vehicular crossing of the bridge is now prohibited.

The Mad River flows along Route 100 from Middlesex (Exit 9 off Interstate 89) to Warren. The river provides numerous scenic views and natural swimming holes as well as canoeing and tubing opportunities.

There are hiking, biking and horseback riding tours arranged to go from inn to inn.

Still, for the vast majority of visitors, Central Vermont’s great outdoor activity is not planned or programmed, it is discovered. Much of the enjoyment is exploring and creating an experience that is unique to you and your family -

one that will never be duplicated by anyone else.



More To Do & See

Barre Country Club	Plainfield	476-7658
Millstone Hill Trails	Barre Town	479-1000
Morse Farm Ski Touring Center	E Montpelier	223-0090
North Branch Nature Center	Montpelier	229-6206
Twin City Lanes & Games	Berlin	476-6181
Vermont Mountaineers	Montpelier	229-0068
Vermont Frost Heaves	Barre City	860-0082

CARVED IN GRANITE

Granite industries and artistry have been a mainstay of the Central Vermont community for more than a century. Local cemeteries are more than a resting place for generations of stonecutters; they are outdoor museums containing the nation's finest examples of memorial design and granite craftsmanship. Visitors can follow the flow of granite from the quarries through the processing plants to monuments, building façades and cemetery memorials.

Years of extraction at the Rock of Ages quarry have created the largest and deepest monumental granite quarry in the world. It is 450 feet deep, 550 feet wide and a quarter-mile long. The top opening spans 27 acres. To see the quarry itself, one must visit the site. However, derricks and piles of grout can be seen from miles away. The visitors center explains how nature created underground pockets of granite.

Granite blocks are cut with diamond saws, polished, and used for both interior and exterior building design.

Block and carved granite façades are prevalent in building architecture throughout the region. Many downtown buildings are more than 100 years old, and most have granite somewhere in their structure.

Of course, the Vermont State House is the most dominant granite structure in the region. Whether viewed from a nearby hillside, across the large State House lawn, or from within touching distance, its granite walls and pillars are an imposing sight that should not be missed.

Granite is elaborately etched for cemetery memorials sculpted to produce public monuments like those in downtown Barre - Scottish poet Robert Burns, "Youth Triumphant" and the Italian-American monument.



Scottish immigrants took it upon themselves to honor one of their native country's greatest poet's, Robert Burns, in recognition of the 100th anniversary of his death. The statue is located on Washington Street (Route 302) on the lawn of the Vermont History Center where the figure stands atop an enormous Barre granite base, intricately carved with bas-relief depictions from his poetry.

In 1924, the Soldiers' and Sailors' memorial, also known as "Youth Triumphant," was erected. Carved from Barre granite by local artisans, the warrior sits atop a granite base inscribed with verses from poet Laurence Binyon's "Ode for the Fallen." A sweeping granite bench, often referred to as the "whispering wall" because the graceful curve "carries" sound from one end of the bench to the other, completes the memorial. It is located on North Main Street (Route 302).



In 1985 the Italian-American monument was erected in Dente Park in the northern part of the city. The apron clad figure of a sculptor with chisel and hammer in hand is 23 feet tall and weighs 43 tons. The memorial is dedicated to sculptor Carlo Abate who came from Italy to Barre at the turn of the century and established the first art school where students could learn drafting, design and other skills associated with the granite industry. The statue is located on North Main Street (Route 14).

Vermont Granite Museum's Stone Arts School is in an authentic turn-of-the-century granite manufacturing plant. Locally known as the Jones Brothers Company, it was once considered to be "the largest granite manufacturing plant in the world." Following in the tradition of Carlo Abate, the Stone Arts School is committed to creating an exciting environment where sculptors from around the world can explore traditional

and modern stone carving techniques with working professionals, while promoting granite as a vital material for artistic expression.

The Millstone Hill Trails Association and the Vermont Granite Museum and Stone Arts School have collaborated at the renovated Historic General Store in Websterville with a VGM/SAS annex and a variety of Vermont Products. The museum's three-room self-guided exhibit displays artifacts, photography and educational material relating to the history of quarrying in Central Vermont.

Hope and Elmwood cemeteries are often termed "the show places of the Barre Granite Industry."

Elmwood cemetery is the older of the two. It is located at the intersection of Washington and Hill streets in Barre. Here one sees a variety of styles in monument design from the very early colonial tablets, through the more elaborate and romantic designs of the Victorian era, to the contemporary art of the twentieth century.

A favorite sculpture is "Little Max," a charming statue in memory of a curly headed, young boy, dressed as little boys were in the 1890s with his high button shoes and a dress.

Where Elmwood is a link from the past to the present, Hope Cemetery is a link from the present to the future. Hope is a uniquely beautiful cemetery that boasts some of the finest examples of memorial art ever created.

The entrance to Hope cemetery is one of simple, dignified beauty with figures representing Peace and Salvation. Inside the gates hundreds of one-of-a-kind statues memorialize loved ones. Visitors will find monuments carved as a cube, an airplane, a soccer ball, and even a racecar.



Perhaps the best known was carved for Elia Corti. He was a truly gifted young Italian who carved, among other things, the four panels on the Robert Burns statue.

On Elia Corti's grave site is an outstanding piece of memorial art. It is extraordinary because it is cut from one block of granite. It is life size and we are told that it is a remarkable likeness of the man. Mr. Corti is seated in front of a shell rock pitched stone. His hand

rests on a shortened column. It is complete in every detail showing the seams in his coat, the folds of his tie and the creases in his trousers, the buttons and button holes down to the last thread. The tools of his trade - calipers, chisel, square and hammer - are at the foot of the shortened column. The palm leaf on the other side symbolizes Spiritual Victory.

Visit www.central-vt.com for more history of the granite industry and artistry or to download maps of the cemeteries.



BARRE GRANITE ASSOCIATION

Call our office for information on plant tours and visits to world famous Hope Cemetery.
51 Church St., Barre. 476-4131 www.barregranite.org

ROCK OF AGES GRANITE QUARRY

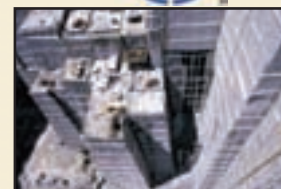
Sandblast Activity: Squeeze the trigger and You'll feel the throb of abrasive as you cut in the Dig stone! Mid June through mid August.

Mon-Sat: 10:30-4:40. Tour our quarry, nearly 600 feet deep! Memorial Day weekend through mid October. Mon-Sat 9:15-3:35. Sun: 10:15- 3:35. View Artisans M-F 8-3:30. Rock of Ages Visitors Center, May-October.

I-89 Exit 6. 558 Graniteville Rd., Graniteville. 1-866-748-6877 or 476-3119. www.rockofages.com



Quarry
and
Factory
Tours



VERMONT PRODUCTS

The beauty of the Green Mountains belies the volume of activity that takes place in Central Vermont. The bustle of factories built on the resources of the Vermont countryside may be hidden from the casual observer, but these factories are among the great fascinations of Central Vermont.

Makers of Vermont products welcome visitors. They are proud to demonstrate the commitment to quality that has given Vermont products their well-deserved national reputation.

Perhaps best of all in these challenging financial times, guests can learn about the production process without spending much, as most are free.

Visitors could spend a whole summer enjoying the sights, attractions, and recreation while putting hardly a dent in their budgets.

Culinary treasures include artisan cheeses, maple syrup, handmade chocolate, ice cream, coffee, apple cider, unique wines and more.

Many local companies have visitor centers and gladly provide guided tours of the manufacturing operations. Others are so small that the owner must make time to provide a personal tour and describe the process.

Vermont Smoke and Cure, using pure ingredients and old fashioned ways, smokes meats from Vermont farmers and makes natural sausages. While too small to provide tours, their on-site deli serves their products.

Vermont's first claim to culinary fame is sweet, sweet maple syrup. The same trees that launch Nature's glorious show of fall colors are the source of its sweet syrup as well.

Maple producers collect the sap from the sugar maples in the spring. Forty gallons of sap must be boiled for hours to produce a single gallon of pure maple syrup.

Several of the larger sugar-makers, including the Morse and Bragg farms, maintain a year-round

business by selling not only their syrup but also a wide variety of other Vermont crafts and food products.

Visitors journey along backcountry roads between sugarhouses and wind through the fields and farms of Central Vermont to find the tranquility of Grand View Winery. Flowering gardens and a gallery of Vermont art provide a wonderful background for delightful wine tasting. Visitors can tour the wine-making learning center and see the process that turns grapes and simple fruits into distinctive wines.

Vermont is the Napa Valley of cheeses, as it has developed from a dairy state to the premium artisan

cheese state. Central Vermont is home to two of the premier makers, Cabot Creamery and Vermont Butter & Cheese. The Cabot Cooperative makes cheddar cheese and other dairy products of exceptional quality. Vermont milk is transformed into cheese, yogurt, butter, sour cream and dips by 250 workers in a multi-million dollar manufacturing plant located in a village of just 750 people.

Barre is home to the Vermont Butter & Cheese Company, a manufacturer specializing in European-style cheeses, including goats' milk cheese, Mascarpone and many others.

If the finished product is more important than the manufacturing process, Cabot and other local food producers share a retail outlet on Route 100, just north of Exit 10, off Interstate-89. There the Green Mountain Chocolate Company also sells hand-dipped diet-busters no one can resist.

Nearby are the Ben & Jerry's ice cream factory, the Cold Hollow Cider Mill, and the Green Mountain Coffee Roasters welcome center and café.

The coffee roasters occupy several buildings in downtown Waterbury, but the most visible is the welcome center in the restored railroad station. There gourmet coffee flavors are complemented by videos of the bean buying and roasting processes, the history of Waterbury and the "great flood" of 1927.



Ben & Jerry's is a name recognized in households throughout the United States and several foreign countries. Located near Waterbury, Ben & Jerry's (tour fee) may be the most visited attraction in Vermont.

Just up the road you can experience the tradition of freshly pressed apple cider at Cold Hollow Cider Mill. Watch the process of pressing cider from just-picked apples, and enjoy the distinctive sweet-tart flavor of cider or the mill's hundreds of other apple products. Grand View winery also has a retail store at the mill.

The tours are free and entertaining, the food is fabulous, and the calories can be offset with some biking or hiking. Enjoy!



At Bragg Farm learn about 8 generations of maple sugaring from the Bragg Family! Enjoy free maple tours and tasting. See our great display of old sugaring tools and walk through our 2000-bucket maple woods! All ages will enjoy our large gift shop, friendly farm animals, picnic area, and **maple ice cream parlor**. We ship anywhere! Free catalog! Exit 8 off I-89. 5 miles on US RT 2 E. Bear left, 1 mile on VT RT 14 N. 1005 Vt. Rt. 14 N., E. Montpelier. 223-5757 or 800-376-5757 www.braggfarm.com



CABOT CREAMERY COOPERATIVE

Come see how the "World's Best Cheddar" is made! Watch our video, and take a guided walking tour of our factory. Nibble samples of our award-winning cheeses! Dairy farmer owned since 1919. Tours \$2. Children under 12 free. Call ahead for cheese making days. Rt. 2 to Rt. 215 in Cabot. 800-837-4621. www.cabotcheese.com



COLD HOLLOW CIDER MILL

Voted "New England's favorite Cider Mill" by readers of Yankee Magazine. Watch the apples being pressed into cider, visit the specialty bakery or browse the retail store for Vermont gifts and crafts. Thousands of visitors each year make this one of Vermont's most visited attractions. 3600 Waterbury-Stowe Rd., Waterbury Center. 800-3Apples or 244-8771. www.coldhollow.com



GRAND VIEW WINERY



Vermont country wines including elderberry, blueberry, rhubarb, and grape. Get off the beaten track. Come taste, tour, and enjoy spectacular views. Open 11-5. Also retail and tasting room at Cold Hollow Cider Mill in Waterbury. Max Gray Rd. E. Calais. 456-7012. www.grandviewwinery.com

Green Mountain Coffee® Visitor Center & Café
at Waterbury's historic train station.

Breakfast & Lunch Served
Seven Days a Week
7 a.m. – 6 p.m. (seasonally 7 a.m. – 7 p.m.)

1 Rotarian Place • Waterbury, VT 05676
1-877-TRY-BEAN • www.GreenMountainCoffee.com

MORSE FARM SUGAR HOUSE

World-wide mail order service of our famous maple syrup and gifts. Offering free tours and tasting, outdoor dioramas, and Vermont foods and crafts. Experience our Woodshed Theater, and stroll our Maple Trail. Summer features barnyard animals while winter offers 25 kilometers of cross country skiing trails. Open 7 days a week, year round. 1168 County Rd., E. Montpelier. 223-2740. www.morsefarm.com.



Vermont Products

Bragg Farm Sugar House	E Montpelier	223-5757
Cabot Creamery Visitor Center	Cabot	563-3393
Cold Hollow Cider Mill	Waterbury	244-8771
Grand View Winery	Calais	456-7012
Morse Farm Maple Sugarworks	E Montpelier	223-2740
Vermont Butter & Cheese Co	Barre Town	479-9371
Vermont Smoke & Cure	Barre Town	476-4666



Vermont's Area Code is 802 ~ Visit www.central-vt.com



OUR COMMUNITIES

Central Vermont's downtowns are an eclectic mix of history, art and culture amidst the hustle and bustle of a thriving small business community. Many businesses are housed in buildings with designs and architecture popular more than 100 years ago. A walk through the downtown areas provides insights into the early years of our nation's history. A self-guided walking tour brochure of Barre, Montpelier, Waterbury and Waitsfield can be picked up at information centers and many retail locations.

Downtowns house a thriving arts community with a spectacular variety of galleries, museums and performing arts. Vermonters pride themselves in being creative, and visitors are amazed by their craftsmanship.

Explore free exhibitions of contemporary artwork, meet working resident artists, and explore your own creativity in art classes or workshops.

Enjoy productions of contemporary plays, classics, and original works in the ambience of historic buildings.

Relax to chamber music performed by some of the world's finest musicians, or visit a community music school for people of all ages and abilities.

Kick up your heels at The National Traditional Old-Time Fiddlers' Contest and Festival, or participate in a community celebration of culture and history with art exhibits, stock car racing, live bands, street dances,

book sales, parades, music, cultural history tours, performing and visual arts, and fabulous food.

Unique, owner-operated shops are the backbone of the communities and provide a good share of the employment and character of the downtowns.

Homegrown vegetables and hand-made crafts can be found at the area's Farmers Markets held weekly in most communities during summer months.



Montpelier, the nation's smallest capital city, is located in a picturesque valley along the Winooski River. The intimate size and historic neighborhoods provide the backdrop for its many institutions of higher learning, insurance companies, and state government.

Its thriving retail, service and arts economy provides diversity enjoyed by residents and visitors alike. This

compact city often makes walking the preferred method of transportation, and it is on the national and state registers of historic places.

The arts community is alive and well in the capital city. Home to many arts venues including Lost Nation Theater, TW Wood Art Gallery, Vermont College of Fine Arts, Vermont Historical

Society, and Artisan's Hand. Indeed, Montpelier has something for everyone.

New England Culinary Institute and a wide variety of restaurants provide culinary delights to challenge the most discriminating tastes.



Central Vermont's largest municipality, Barre is the "Granite Capital of the World." The work of its artisans can be seen in the building architecture, statues and in its cemeteries. The stone industry attracted laborers and artisans from all over Europe, creating a broad ethnic mix.

Barre is a manufacturing center dominated by granite-related industries. As in Montpelier, both history and art are abundant. An easy walk through downtown reveals three granite sculptures, many historic buildings, restaurants and arts venues. City Park is sided by Barre Opera House, Vermont History Museum and Aldrich Public Library.

Studio Place Arts is a gallery for studio artists and has an active class schedule on the premises. The Stone Arts School is located at the North End of the city in what was once the nation's largest stone shed.

Northfield is host to the nation's oldest private military college, Norwich University. Very near the geographic center of the state, the town is a wonderful combination of college town, traditional New England village, and blue-collar community.

Resort towns in the Mad River Valley have a character all their own — there is not a single traffic light. The hospitality industry dominates these towns, but not the landscape. Bridge Street marketplace boasts unique shops, artist studios, and the Great Eddy Covered Bridge.

The valley is home to quality arts and festivals, including classical and contemporary music concerts, plays at the Valley Players Theater, and the month-long Vermont Festival of the Arts featuring more than 125 exhibits, workshops and demos by a variety of Vermont artists. While the visual and performance arts are the core of the Vermont Festival of the Arts, there are workshops, garden/house tours, kids activities, community celebrations, culinary classes, literary excursions and musical masterpieces that happen every day, all month, each August.

Located in the northwest corner of Washington County, Waterbury enjoys a desirable physical location as well as scenic beauty. Interstate 89 passes through Waterbury, enabling easy access to Burlington and Montpelier. Route 100 leads north to Stowe and south

to the Mad River Valley. The Winooski River Valley, Green Mountains, and rolling hills offer spectacular year round views that bolster Waterbury's claim to being the "Recreational Crossroads of Vermont."

Things To Do & See

Aldrich Public Library	Barre City	476-7550
Barre Country Club	Plainfield	476-7658
Barre Opera House	Barre City	476-0292
Brown Public Library	Northfield	485-4621
Canadian Club Inc	Barre Town	479-9090
Capitol Movie Theatre	Montpelier	229-0343
Circus Smirkus	Montpelier	922-1339
First In Fitness Racquet&Swim Club	Berlin	223-4686
Gregory Lane Stables LTD	Brookfield	276-2155
Hope Cemetery	Barre City	476-6245
Kellogg-Hubbard Library	Montpelier	223-3338
Lost Nation Theater	Montpelier	229-0492
Millstone Hill Trails	Barre Town	479-1000
Morse Farm Ski Touring Center	E Montpelier	223-0090
North Branch Nature Center	Montpelier	229-6206
Paramount Movie Theatre	Barre City	479-9621
Pease Farm Stable	Middlesex	223-4828
Rock of Ages Granite Quarries	Barre Town	476-3119
Studio Place Arts	Barre City	479-7069
T.W. Wood Gallery	Montpelier	828-8743
Twin City Lanes & Games	Berlin	476-6181
Vermont Frost Heaves	Barre City	860-0082
Vermont Historical Society	Barre City	479-8519
Vermont Mountaineers	Montpelier	229-0068
Vermont Ravens	Barre	879-1464

T.W. WOOD ART GALLERY

A repository of one of the finest collections of 19th century Americana art displayed on a rotating basis in the Wood Room on the Vt. College Campus. 36 College Hall, Montpelier. 828-8743
www.twwoodgallery.org/

LOST NATION THEATER

Catch the Magic with "the state's premier producer of Shakespeare & contemporary theatrical fare"- Seven Days. Performances in historic downtown Montpelier at its intimate, elegant theater at City Hall April - Oct. with an eclectic mix of comedies, dramas, musicals, and Shakespeare. Special events & education programs year-round. 39 Main St. 229-0492.
www.lostnationtheater.org



CHANGING SEASONS

The start of maple sugaring announces spring in Vermont with the sweet fragrant steam lofting from sugarhouses. Maple Open House Weekend, typically the last weekend in March, is the public celebration of the maple syrup season and an opportunity for the public to visit sugarhouses.

Open Studio Weekend, typically Memorial Day Weekend, allows visitors to drop in on craftspeople as they work in studios located in or close to their residences. These places of production and inspiration are located in downtowns as well as at the ends of dirt roads.

As the trees and grass turn green, outdoor sports and fishing seasons begin. Gardens are planted and school ends. Graduations and weddings bring a flurry of activity.

Summer brings festivals, outdoor concerts, mountain hikes, swimming, ice cream and farmers markets. Softball games or semi-professional sports can be enjoyed most evenings.

While thousands of visitors come for Central Vermont's summer festivals and winter carnivals, several times as many come for Mother Nature's month-long fall festival of color.

Vermont is one of only a few places in the world that has just the right combination of climate, soils and tree species to produce the spectacular array of colors that is fall foliage.

Colors in Central Vermont generally turn the last 10 days of September and remain colorful through mid-October.

The change usually begins slowly - a few trees turn early. Later a few more trees change color. Then comes the show. Every year, forests in Central Vermont shift to full blaze over just a few days.

Late September visitors will watch the color appear. Those here the last few days of September and the first week in October will likely see the most brilliant color. The second week of October brings the "harvest colors." Colors are muted. Brilliant yellows have turned golden, but remain quite impressive.



Auto tours and off-road bike tours are scenic any time, but they are especially impressive during fall foliage. Enjoy the views from the comfort of your car, or while biking or walking historic downtowns.

The quiet villages, rolling hills, and breath-taking scenery could not have been better designed for the biking enthusiast, but you can enjoy some of the best scenery without ever leaving your automobile. A combination of paved and unpaved roads winding by historic communities and picturesque countryside provides the perfect setting for day-long exploration. You'll encounter steeped churches, covered bridges, country stores, and dairy farms. You'll pass forests, streams, and quiet ponds. A perfect way to enjoy the wonder of Central Vermont.

Vermont's first snow brings a changing of the garb. Hiking boots are exchanged for snowshoes, and swim suits for ice skates. Bicycles are put up, and skis are taken down. Canoes are placed in storage, and snowmobiles emerge.

The region is transformed. When urban cities turn dark and dreary, Vermont turns crisp and exciting. Its winter playground is ready to host the hearty and adventurous.

Central Vermont gives you the best skiing, cross-country or downhill, in the East. The Mad River Valley combines three peaks to provide one of the nation's most complete ski resorts.

Cross-country ski and snowshoe touring centers provide variety ranging from world-class trails designed by two-time Olympian John Morton to one of the Northeast's most unusual cross-country ski experiences – circling the old quarries and grout piles – with about 35K of groomed ski trails and five miles or so of marked snowshoe trails.

Many inns and motels are immediately adjacent to the VAST (Vermont Association of Snow Travelers) network of snowmobile trails that spans the state. Branch trails are groomed by local clubs while the main arteries are tended by VAST. Let Central Vermont replace your winter blahs with unmatched adventure.

RESTAURANTS

Great food is always in season, and Central Vermont has a variety that can please the most discriminating taste. You'll discover top-notch elegant cuisine, home cooked meals, fast-food, renowned culinary school entrees, natural foods and bakery delights.

If you want Italian, Asian, American, Irish, Mexican or French; an elaborate setting, a bistro, a quaint café, a family diner, or a unique deli; whatever your mood, enjoy it in Central Vermont!



ANGELENO'S PIZZA

A full-service restaurant serving lunch and dinner daily with Vermont local and organic products. New York style pizza, calzones, salads, subs, steak, chicken, seafood and pasta. Traditional Italian food made with the freshest ingredients. We offer gluten free pasta, wheat crust pizza and VT Highland beef! Take out available. We are "a slice above the rest!" 15 Barre St., Montpelier. 229-5721. www.myspace.com/angelenospizza



MAXI'S RESTAURANT

Come visit Maxi's at the Crossroads of Rt 2 and Rt 100 in Waterbury. We serve breakfast and lunch daily until 2 pm and dinner 5 nights a week. Dinners include: shrimp scampi, fresh battered fish & chips, meatloaf and salads. Family friendly dining at an affordable price. 47 N. Main St., Waterbury. 244-0910. www.maxisrestaurant.com



PARK ROW CAFÉ

Serving country-style breakfasts and full lunches. Big salads, oven-fresh homemade bread made daily, variety of soups, burgers, phillys, big homemade cookies, quick deli lunch service, wraps, vegetarian choices and more! We pride ourselves on making every item from scratch. Visa/Master Card/ Amex accepted. Hours: M-F 6:30-2:30. Saturday 7-Noon. 7 Park Row, Waterbury. 244-5111. www.central-vt.com/web/parkrow



JAY'S RESTAURANT

Open for breakfast and lunch 7 days a week and dinner Tuesday-Saturday. Catering and take-out available with a full liquor license. Waitsfield. 496-8282.

Restaurants

Angeleno's Pizza	Montpelier	229-5721
Arvad's Restaurant	Waterbury	244-8973
Berlin Subway	Berlin	476-3737
Capitol Grounds Cafe & Roastery	Montpelier	223-7800
Chef's Table Event Center	Montpelier	229-9202
Dunkin' Donuts Barre	Barre City	479-0629
Dunkin' Donuts Berlin	Berlin	No Phone
Dunkin' Donuts Montpelier	Montpelier	223-0928
Gusto's	Barre City	476-7919
Hilltop Restaurant	Barre Town	479-2129
J. Morgans Steakhouse	Montpelier	223-5222
Jay's Restaurant	Waitsfield	496-8282
Julio's Cantina	Montpelier	229-9348
La Brioche Bakery	Montpelier	229-0443
Main Street Grill & Bar	Montpelier	223-3188
Maxi's Restaurant	Waterbury	244-0910
McDonald's	Berlin	479-9757
McDonald's	Barre Town	476-4400
McGillicuddy's Irish Pub	Montpelier	223-2721
Mister Z's Pizza & Pasta	Barre City	479-3259
Mulligan's	Barre City	479-5545
Park Row Cafe	Waterbury	244-5111
Restaurant Phoebe	Montpelier	262-3500
Sarducci's	Montpelier	223-0229
Simply Subs	Barre City	479-2423
Soup 'N' Greens	Barre City	479-9862
Steak House Restaurant	Berlin	479-9181
The Alchemist Pub & Brewery	Waterbury	244-4120
The Farmhouse Cafe & Catering Co.	Calais	456-9900
Wayside Restaurant & Bakery	Berlin	223-6611

ACCOMMODATIONS

You'll find accommodations to meet your needs as diverse as the region itself ~ rustic or exquisite! Options include a cabin in the woods, a homey bed and breakfast, an efficient family-friendly condominium, a tent site or a quality motel room.

Whether you want to be downtown or in the country, if you need pet friendly, or prefer an eco-friendly "green" property, you'll find a range of choices.

You'll also find genuine friendliness and people who want to help you feel right at home. So stay a night, stay a weekend, or stay a week, and enjoy Central Vermont!



COUNTRY BUMPKIN BED & BREAKFAST

Looking to escape the hustle and bustle of everyday life? Treat yourself to a stay in our log cabin B&B, complete with spectacular views, fireplace, pool, porches, and bountiful homemade breakfasts! Dugar Rd., Worcester. 223-5822 www.countrybumpkinbnb.com



HOLLISTER HILL FARM BED & BREAKFAST

Wonderful 1825 farmhouse on a 200-acre farm with traditional barn, animals, gardens, sugarhouse, fields, and woodlands. Rooms with fireplaces, saunas, and private baths. Serving a country-style breakfast featuring our own farm products. 2193 Hollister Hill Rd., Marshfield. 454-7725. www.hollisterhillfarm.com



Maplecroft Bed & Breakfast

A grand Victorian home just a short walk to downtown Barre. Two suites that accommodate up to four, one with a full kitchen, and three double-occupancy guest rooms. Private baths in all suites and guestrooms. Spacious common area with a wraparound porch and a well-tuned grand piano. Serving a hearty freshly prepared breakfast. 70 Washington Street, Barre. 477-5050. www.maplecroftvermont.com

THE UGLY DOG B&B

The Ugly Dog B&B is perfection with character and exclusively yours. It is home away from home, located just 1.3 miles from the State House in Montpelier. Smoke free/ Dog friendly. 95 Terrace St., Montpelier. 229-9447 www.central-vt.com/web/uglydog



Accommodations

B & B at Middlesex College	Middlesex	229-6633
Betsy's Bed & Breakfast	Montpelier	229-0466
Country Bumpkin B & B	Worcester	223-5822
High Hill Inn	E Montpelier	223-3623
Hollister Hill Farm B & B	Marshfield	454-7725
Hunger Mountain Inn	Waterbury	244-7486
Inn at Montpelier	Montpelier	223-2727
Maplecroft B & B	Barre	477-5050
Millstone Hill	Barre Town	479-1000
Mountain Meadow View B&B	Waterbury	244-8944
Thatcher Brook Inn	Waterbury	244-5911
Yellow Farmhouse Inn	Waitsfield	496-4263

Cabins & Campgrounds

Birch Meadow Luxury Cabins	Brookfield	276-3156
The Ugly Dog B&B	Montpelier	229-9447
The Woods at Wihakowi	Northfield	279-3992
Limehurst Lake Campgrounds	Williamstown	433-6662

Hotels & Motels

Best Western	Waterbury	244-7822
Capitol Plaza Hotel & Conference Center	Montpelier	223-5252
Comfort Inn & Suites	Berlin	229-2222
Days Inn of Barre	Barre City	476-6678
Hollow Inn & Motel	Barre City	479-9313

While visiting, chances are good you'll be served Green Mountain coffee, local cheeses, Vermont maple syrup, local fresh fruit, a scoop of Ben & Jerry's, and some fresh cider or local wine. Products that you enjoy here can be served at home as well, keeping the spirit of your trip alive! Visit www.central-vt.com to find your favorite Vermont Products.



Betsy's Bed & Breakfast

Set in a quiet historic district close to shops and restaurants, this Queen Anne B&B is both comfortably homey and romantically Victorian. The 12 rooms and suites with private baths, A/C, CATV and telephone are beautifully appointed with outstanding antiques and orientals. 74 E. State St., Montpelier. 229-0466. www.betsysbnb.com



THATCHER BROOK INN

A landmark location known for its 423-foot-long porch, complete with tall back rockers, and its twin gazebos that frame its courtyard entrance. "Vermont's Most Romantic Inn."

Thatcher Brook Inn is the epitome of a

New England Country Inn with fireplaces and antiques at every turn. Our twenty-four guest rooms are romantically decorated in classic country style.

Ideally located for whichever season you choose to visit, close to four major ski areas, Vermont's capital - Montpelier, golf, hiking, biking, tennis, shopping, sightseeing, and more!

1017 Waterbury-Stowe Rd., Waterbury. 244-5911.

www.thatcherbrook.com



THE INN AT MONTPELIER

Two stately historic buildings featuring 19 guestrooms, all with private baths, cable TV, wi-fi and telephones, individual heat & A/C controls. Our deluxe rooms have wood-burning fireplaces - as well as five others in the Inn's common areas. We serve an extensive continental breakfast with baked goods from La Brioche Bakery.

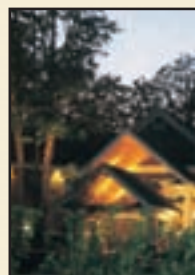
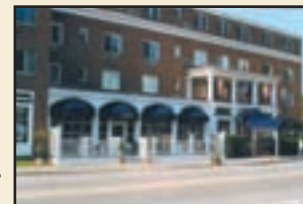
147 Main St., Montpelier. 223-2727. www.innatmontpelier.com



CAPITOL PLAZA HOTEL & CONFERENCE CENTER

Beautifully appointed rooms and superior guest service with high speed internet access, boardrooms, conference rooms, and elegant ballrooms. Featuring J. Morgan's Steak House: "A cutting edge steak and seafood house." Adjacent to the state capitol, historic museum, movies and shops. 100 State St., Montpelier.

223-5252 or 800-274-5252. www.capitolplaza.com



COMFORT INN AT MAPLEWOOD LTD

Travelers on I-89 will find the Comfort Inn & Suites at Exit 7 in Montpelier - the Capital City of Vermont - a welcome and convenient place to stay. Enjoy a deluxe continental breakfast and wired/wireless internet throughout - all complimentary. 229-2222. www.comfortinnsuites.com

HOLLOW INN & MOTEL

Sincere Vermont hospitality offering comfortable suites and efficiencies. Outdoor and indoor hot tub, sauna, fitness center and outdoor pool. Cable TV. Pet rooms and doggy walk. Minutes off I-89, located on the VAST trail! Wireless internet in all rooms! 278 S. Main St., Barre. 479-9313 or 800-998-9444. www.hollowinn.com



Make our place, your place in Vermont

84 guest rooms and suites on an airy hillside. Café, Indoor Pool, Saunas, Fitness Center, Game Room, Playground, Covered Bridge. Convenient to Stowe, Burlington, and Montpelier. Explore Vt all day long, then come home to Best Western.



WATERBURY-STOWE

INTERSTATE 89, EXIT 10 AND RT. 100 NORTH

1-800-621-7822

www.bestwesternwaterburystowe.com

